

Equity, resources and finance

Lim Li Ching

Third World Network

CBDA Webinar *Biodiversity COP15 in Montreal:
Looking and acting beyond what the media told us*

16 February 2023



EQUALITY

Equality = Sameness

Equality promotes fairness and justice by giving everyone the same thing.

BUT, it can only work *if everyone starts from the same place*. In this example, equality only works if everyone is the same height.

EQUITY

Equity = Fairness

Equity is about making sure people get access to the same opportunities.

Sometimes our differences or history can create barriers to participation, so we must **FIRST ensure EQUITY** before we can enjoy equality.

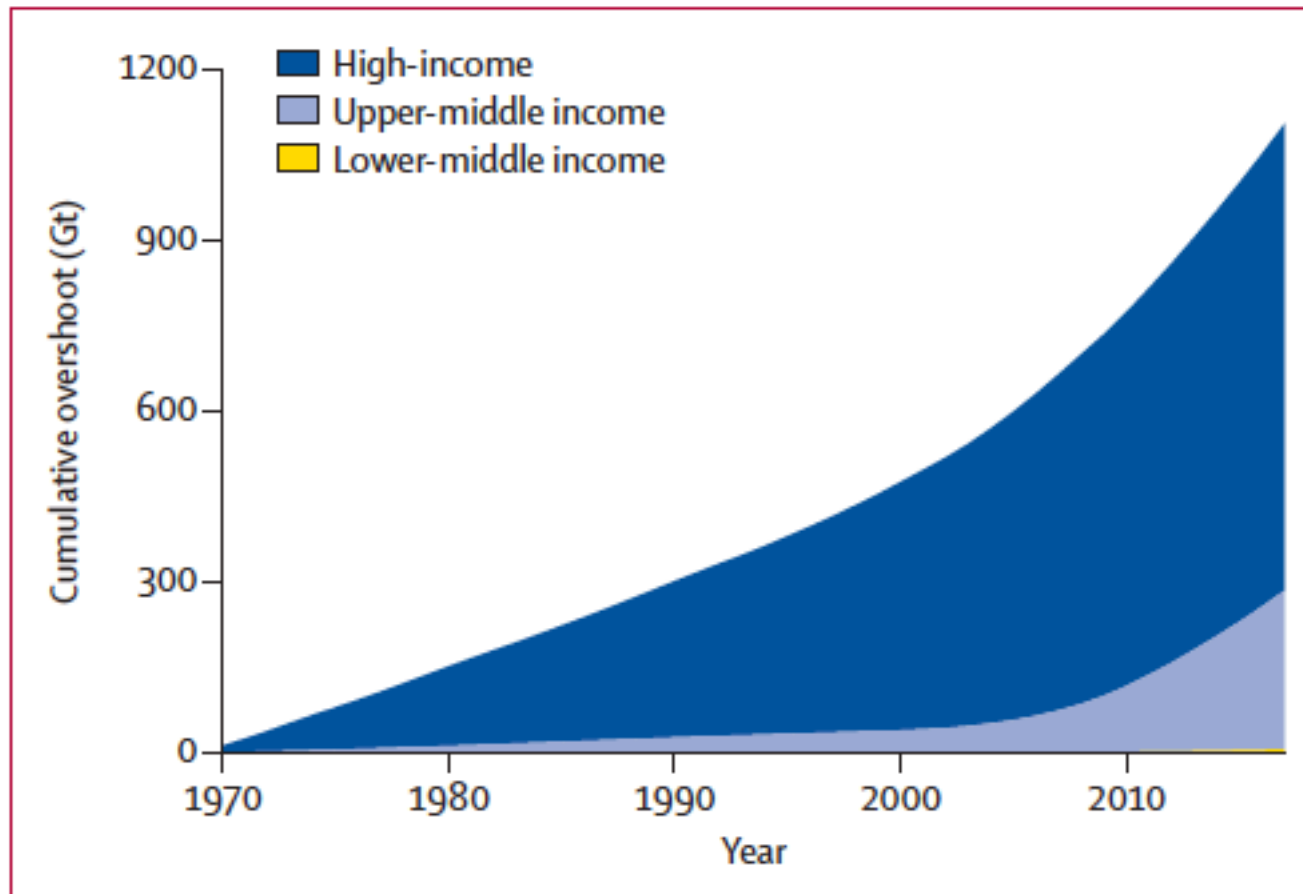


Figure 1: Cumulative excess resource use of countries by income group, 1970–2017

Excess resource use for low-income countries is close to zero (see table 1), and thus not visible in this figure.

Source: Hickel et al. 2022. National responsibility for ecological breakdown: a fair-shares assessment of resource use, 1970–2017.

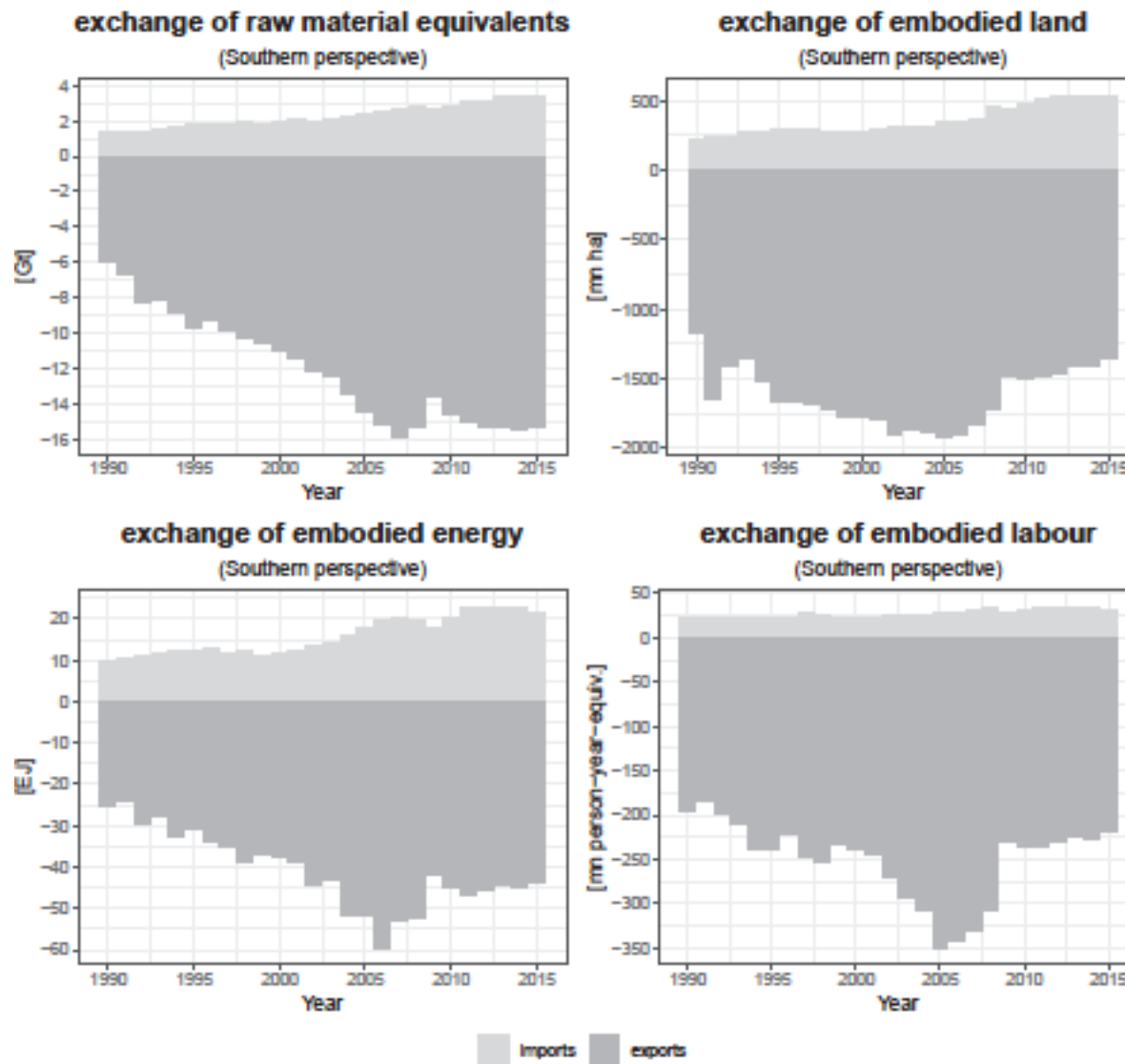


Fig. 1. Resource drain from the South.

Source: Hickel et al. 2022. Imperialist appropriation in the world economy: Drain from the global South through unequal exchange, 1990–2015.